

Name _____

Date 11/4/10

Prisms and Pyramids

Homework

NOTE Students determine how many cubes fit in each of the pictured boxes.

SMH 106-107

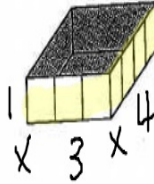
* write equations
More Boxes

1. How many cubes will fit?

$$1 \times 3 \times 4 = V$$

$$3 \times 4 = V$$

$$12 \text{ cubes} = V$$



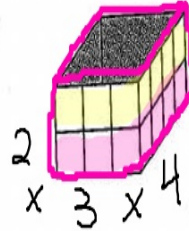
equation →

2. How many cubes will fit?

$$2 \times 3 \times 4 = V$$

$$6 \times 4 = V$$

$$24 \text{ cubes} = V$$



$$12 \times 2 = 24 \text{ cubes}$$

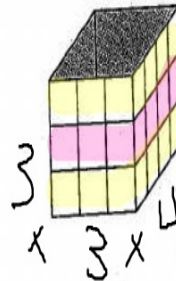
3. How many cubes will fit?

$$3 \times 3 \times 4 = V$$

$$9 \times 4 = V$$

$$36 = V$$

cubes



$$\begin{array}{r} = 12 > 24 \\ = 12 \\ \hline = 12 + 12 \end{array}$$

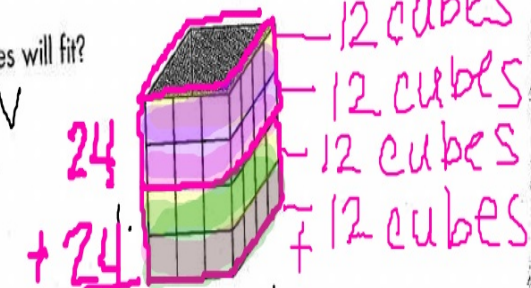
$$36 \text{ cubes} \quad 36 \text{ cubes}$$

4. How many cubes will fit?

$$4 \times 3 \times 4 = V$$

$$12 \times 4 = V$$

$$48 \text{ cubes} = V$$



$$\begin{array}{r} 24 \\ + 24 \\ \hline 48 \text{ cubes} \end{array}$$

$$48 \text{ cubes}$$